



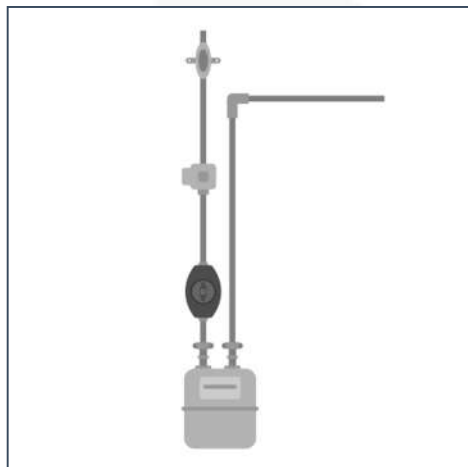
Second Stage Regulator - 1.3 kg/hr

Product Code: C004R

Installed close to the gas appliance, these regulators combine the final regulation stage, the manual shut-off valve and the UPSO (Under Pressure Shut-Off) safety. The TA and T regulators provide also an excess flow safety which stops the gas flow in case of rupture or disconnection of the downstream hose. These regulators are generally used as second stage regulator in LPG installations to supply gas appliances up to 5kg/h (55kW).

Applications

- Compact and pleasant design
- Wall-mounting bracket
- Filter in the inlet connection
- Certain models are delivered with fittings for copper brazing.
- Combine 3 or 4 functions (regulation, manual valve, UPSO, Excess flow safety)
- RPBS: Unique adaptable (LPG-NG-SNG) regulator



Technical Specifications



Code	Inlet code	Inlet connection	Outlet code	Outlet connection	Inlet pressure (Pi) bar	Outlet pressure (Pd) mbar	Flow rate (LPG)		Type of gas	UPSO mbar
							kg/h	kW		
6455600	E6B	MAL-M20x1, 5RH	E6B	MAL-M20x1, 5RH	(0,075) 0, 08-0,2	Propane:37 Natural Gas:22	3) 4 kg/h (3) 4 m3/h	Propane: 55 Natural Gas: 45	Propane Natural Gas	Propane:25 Natural Gas:10

Size:

Packaging: