

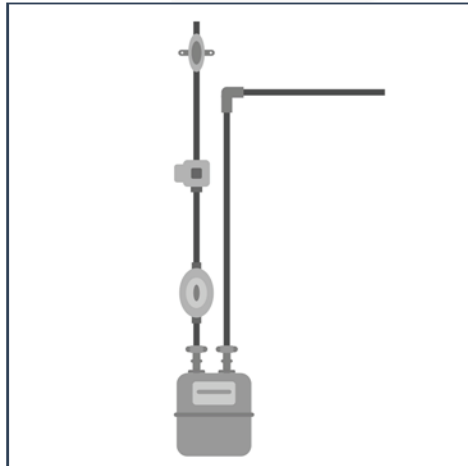


Gas Meter G2.5

SITEX gas meters G2.5 are designed for L.P.G & Natural Gas. Fitted with anti-reversion function and protective coating against corrosion together with high sensitivity and accurate measurement standing as secure and advanced residential gas meters meeting the highest demand in terms of long term stability. Equipped with Pulse Generator (10dm³/Pulse)

Applications

SITEX diaphragm gas meters fully complying with EN 1359 standard and approved by the official European TPI Oil & Gas Institute and Abu Dhabi Civil Defense.
Optional - LF Pulse Transmitter



Technical Specifications

Parameter Name	Unit	Model C 2.5
Nominal Cyclic Volume V	m³/h	2.5
Maximum Flow Rate Qmax	m³/h	4.0
Minimum Flow Rate Qmin	m³/h	0.025
Max. Operating Pressure	bar	0.5
Basic Error Limit	%	Qmin < Q < 0.1 Qmax +- 3% 0.1Q max < Q < Q max +- 1.5%
Thread on Inlet & Outlet	mm	M30x2
Central distance between meter connectors(mm)	mm	130
Total Pressure Loss	Pa	< 200
Maximum reading figures	m³	99999.999
Operating temperature	°C	- 20 to + 50
Storage temperature	°C	- 40 to + 60
Weight	kg	1.8
Inlet		From the left side



30-107 Krakow, Poland Plac na Stawach 1
Tel.: +48-12-4267880 | Fax: +48-12-4267882
Email: office@sitex-polska.com
Website: www.sitex-polska.com



Exclusive Distributor in the G.C.C.
Gas Equipment Company L.L.C.
Loc: Mussafah, Abu Dhabi | Ras Al Khor, Dubai
Tel: +971 2 673 2623 | +971 4 263 1435
www.gecollc.com