



# Gas Meter Gallus 2000

**Product Code: J062**

The ACD diaphragm meters are used for applications requiring high precision and large rangeability at low pressure (below 1 bar gauge). They are supplied in two versions - a compact and a standard version (single and two pipe). Due to the volumetric principle of the diaphragm meters, its metrology is not influenced by installation conditions. They are designed for use with natural gas, manufactured gas and other non-corrosive gases.

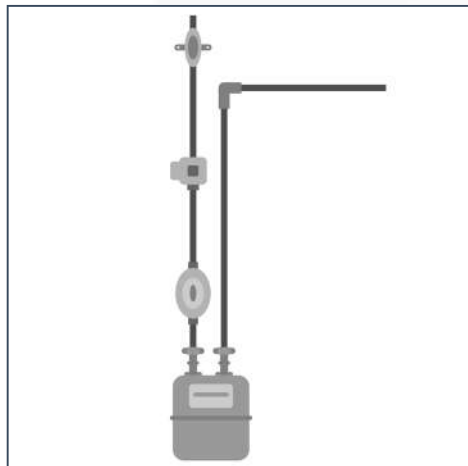
The ACD diaphragm meters are approved for fiscal use.



## Applications

The ACD G10-G16 meters contain 4 main parts

1. A measuring unit with 4 measuring chambers 2 sliding valves and one outlet pipe
2. A steel casing fitted with one or two connections
3. A magnetic coupling or stuffing box which transmits the movement of the measuring unit to the totaliser
4. A totaliser which registers the measured gas



## Technical Specifications

<b>Flow rate range</b>	G10: Qmin 0.10 m <sup>3</sup> /h - Qmax 16 m <sup>3</sup> /h G16: Qmin 0.16 m <sup>3</sup> /h - Qmax 25 m <sup>3</sup> /h
<b>European Metrological Approval (71/318/EEC)</b>	Approval achieved by the German PTB as G6, G10 & G16 (multi-range available)
<b>(71/318/EEC)</b>	Approval N° PTB-1.42-4016867
<b>(71/318/EEC)</b>	Approval N° DE-07-M002-PTB013
<b>Metrology</b>	In accordance with the EN1359 and MID. Maximum permissible errors are +/-3% from Qmin to 0.1 Qmax and +/-1.5% from 0.1 Qmax to Qmax.
<b>Temperature range</b>	Ambient: -25°C to +55°C Gas: -25°C to +55°C Storage temperature: -40°C to +70°C
<b>Maximum pressure</b>	Compact version: 0.5 bar Standard version: 0.5 bar (1 bar optional)
<b>Connections</b>	Single pipe or 2 pipe connections From DN32 to DN50 depending on the G-size Other connections are available on request
<b>Totaliser</b>	8-digit index with IP54 protection. UV resistant cover. Fitted with a reflecting disc on the first drum to facilitate periodical checks. Prepared with a magnet in the first drum (0.1 m <sup>3</sup> /pulse) or second drum (1 m <sup>3</sup> /pulse) for retrofitting an external Low Frequency transmitter. Customised name plate: bar code, customer serial number or logo
<b>Magnetic coupling</b>	The meter is equipped as standard with a magnetic coupling.
<b>Stuffing box</b>	As an alternative a stuffing box can be also installed.
<b>Backrun stop</b>	Prevents the meter from running backwards in case of tampering.
<b>Colour</b>	Light Grey RAL7035

**Size:**

**Packaging:**