

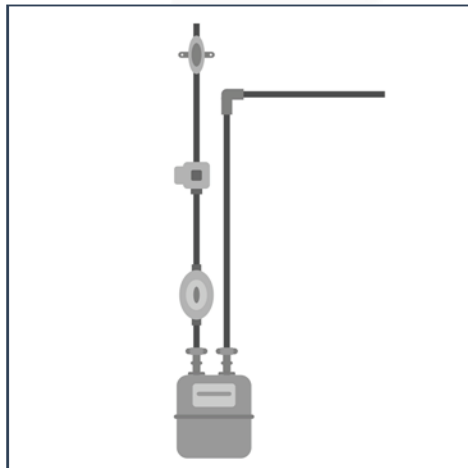


# Gas Meter G4

SITEX gas meters G4 is a a high-grade measuring instrument built with solid structure, high accuracy, safety and a series of advanced technical details. The meter is characterized by precise measurements, a constant measuring stability, a long life and high reliability. The gas meter is suitable for various gas media.

## Applications

SITEX diaphragm gas meter meets the requirements of the EN1359:1998/A1:2006 and OIML R137 (2012) standards.



## Technical Specifications

Parameter Name	Unit	HP G4A
Maximum Flow Rate Qmax	m <sup>3</sup> /h	6.0
Minimum Flow Rate Qmin	m <sup>3</sup> /h	0.04
Max. Operating Pressure	bar	1.5
Max. Pressure Loss	mbar	≤ 2
Max. Permissible Errors	%	Qmin < Q < 0.1 Qmax +- 3% 0.1Q max < Q < Q max +- 1.5%
Display range max.	m <sup>3</sup> /h	99999.9998
Display range min.	m <sup>3</sup> /h	0.0002
Accuracy class	class	1.5
Cyclic volume	dm <sup>3</sup>	1.2
Pulse value	m <sup>3</sup> /pulse	0.01
Weight	kg	2.2
Inlet		From the left side



30-107 Krakow, Poland Plac na Stawach 1  
Tel.: +48-12-4267880 | Fax: +48-12-4267882  
Email: office@sitex-polska.com  
Website: www.sitex-polska.com



**Exclusive Distributor in the G.C.C.**  
Gas Equipment Company L.L.C.  
Loc: Mussafah, Abu Dhabi | Ras Al Khor, Dubai  
Tel: +971 2 673 2623 | +971 4 263 1435  
www.gecollc.com