

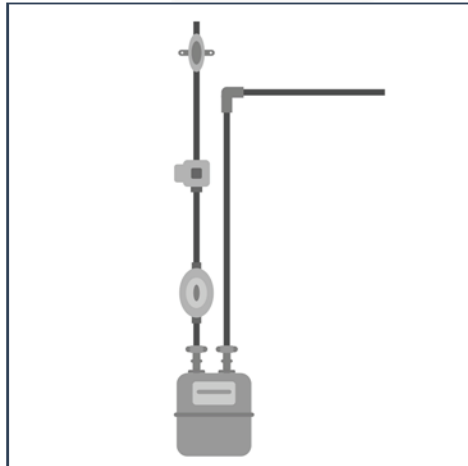


Gas Meter G6

SITEX gas meters G6 is suitable for various gas media. The integrated calibration system coordinates the movement of the valves in relation to the optimum gas flow. The meter is characterized by precise measurements, a constant measuring stability, a long life and high reliability. Thanks to the use of high-grade materials the diaphragm gas meter is resistant to corrosion.

Applications

SITEX diaphragm gas meter meets the requirements of the EN1359:1998/A1:2006 and OIML R137 (2012) standards.



Technical Specifications

Parameter Name	Unit	G6MA
Nominal flowrate	m ³ /h	6.0
Maximum Flow Rate Qmax	m ³ /h	10
Minimum Flow Rate Qmin	m ³ /h	0.06
Max. Operating Pressure	bar	1.0
Max. Pressure Loss	mbar	≤ 2
Max. Permissible Errors	%	Qmin < Q < 0.1 Qmax +- 3% 0.1Q max < Q < Q max +- 1.5%
Display range max.	m ³ /h	99999.9998
Display range min.	m ³ /h	0.0002
Accuracy class	class	1.5
Cyclic volume	dm ³	2
Pulse value	m ³ /pulse	0.01
Weight	kg	3.05
Inlet		From the left side



30-107 Krakow, Poland Plac na Stawach 1
Tel.: +48-12-4267880 | Fax: +48-12-4267882
Email: office@sitex-polska.com
Website: www.sitex-polska.com



Exclusive Distributor in the G.C.C.
Gas Equipment Company L.L.C.
Loc: Mussafah, Abu Dhabi | Ras Al Khor, Dubai
Tel: +971 2 673 2623 | +971 4 263 1435
www.gecollc.com